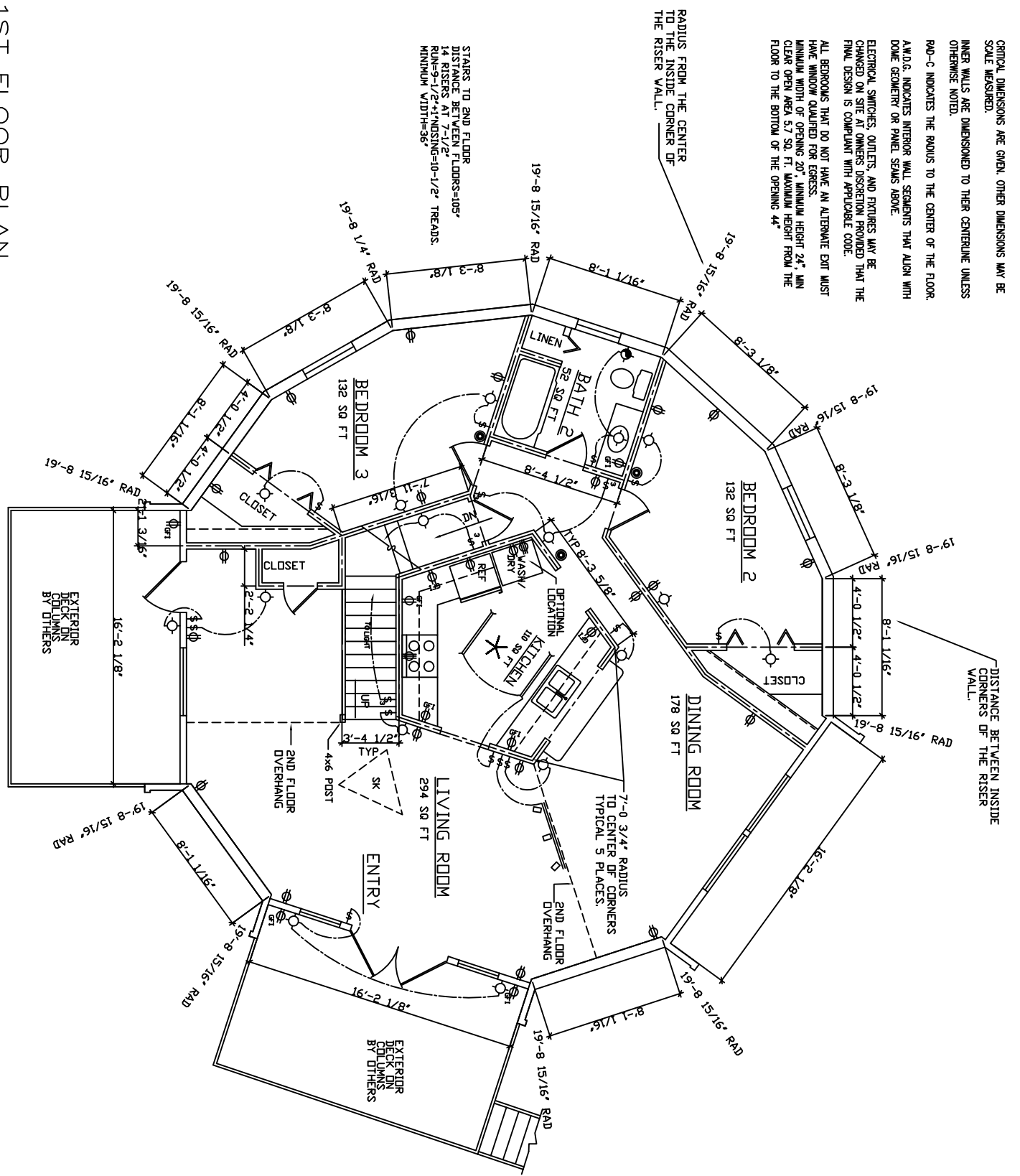


CRITICAL DIMENSIONS ARE GIVEN. OTHER DIMENSIONS MAY BE SCALE MEASURED.  
 INNER WALLS ARE DIMENSIONED TO THEIR CENTERLINE UNLESS OTHERWISE NOTED.  
 RAO-C INDICATES THE RADIUS TO THE CENTER OF THE FLOOR. A.M.D.G. INDICATES INTERIOR WALL SEGMENTS THAT ALIGN WITH DOME GEOMETRY OR PANEL SEAMS ABOVE.  
 ELECTRICAL SWITCHES, OUTLETS, AND FIXTURES MAY BE CHANGED ON SITE AT OWNERS DISCRETION PROVIDED THAT THE FINAL DESIGN IS COMPLIANT WITH APPLICABLE CODE.  
 ALL BEDROOMS THAT DO NOT HAVE AN ALTERNATE EXIT MUST HAVE WINDOW QUALIFIED FOR EGRESS.  
 MINIMUM WIDTH OF OPENING 20". MINIMUM HEIGHT 24". MIN CLEAR OPEN AREA 5.7 SQ. FT. MAXIMUM HEIGHT FROM THE FLOOR TO THE BOTTOM OF THE OPENING 44".

RADIUS FROM THE CENTER TO THE INSIDE CORNER OF THE RISER WALL.

DISTANCE BETWEEN INSIDE CORNERS OF THE RISER WALL.

STAIRS TO 2ND FLOOR  
 DISTANCE BETWEEN FLOORS=105"  
 14 RISERS AT 7'-1/2"  
 RUN=9'-1/2" \* 14 RISERS=10-1/2"  
 MINIMUM WIDTH=36"



1ST FLOOR PLAN

SCALE: 1/4" = 1'-0"  
 AREA: 1,149 SQ. FT.

**AMERICAN  
 INGENUITY**, INC.  
 8777 HOLIDAY SPRINGS RD  
 ROCKLEDGE, FL 32955-5805  
 PH. 321-639-8777 USA

**STRUK RESIDENCE**

1ST FLOOR PLAN

DRAWN BY:  
 CHECKED BY:  
 DATE: 8/14/07  
 DRAWING NO: 40\_STRUK  
 REVISION:

SHEET NO.  
**A-3**  
 COPYRIGHT 2005  
 AMERICAN INGENUITY, INC.